

ASSP Valley Coastal Meeting, December 2020

UCLA Health's Emergency Preparedness Program

Aubrey Sendra
Emergency Management Specialist
asendra@mednet.ucla.edu

Agenda

- Introduction to UCLA Health
- Office of Emergency Preparedness
- Emergency Preparedness & Safety
- The Joint Commission Standards
- Hospital Preparedness Program (HPP)
- UCLA Health Emergency Preparedness Program Areas
- Q&A

UCLA Health

- Four hospitals
 - Ronald Reagan UCLA Medical Center – 525 beds, which includes the 74 bed Resnick Neuropsychiatric Hospital and the 99 bed Mattel Children's Hospital
 - UCLA Medical Center, Santa Monica – 266 beds
- Over 200 clinics
- UCLA Faculty Practice Group
- David Geffen School of Medicine

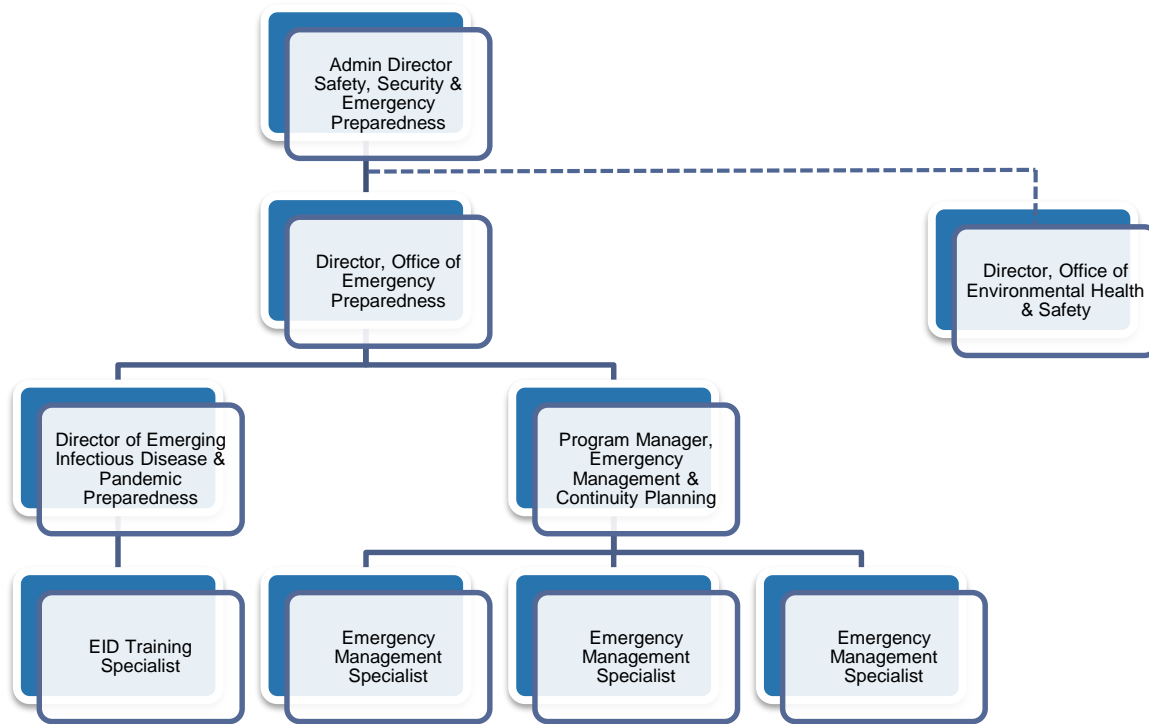


UCLA Health Emergency Preparedness

- Emergency Management
- Business Continuity
- Exercise Planning
- Training
- Alignment of program with HPP, TJC, CMS, and LA County EMSA
- Emerging Infectious Disease (EID) Preparedness



UCLA Health Emergency Preparedness Team



Emergency Preparedness & Safety

- UCLA Health's Environmental Health & Safety department works closely with Emergency Preparedness
- UCLA Health EH&S: Fire safety, radiation safety, hazardous materials safety, ergonomics, respiratory protection, and injury prevention



Emergency Preparedness & Safety

- Areas of collaboration:
 - Ambulatory clinic safety & disaster planning
 - Safety information in Department Emergency Response Manuals
 - Subject matter expertise during pre-incident response
 - Incident response – Safety Officer role in Command Center
 - Support of Emerging Infectious Disease (EID) preparedness program via safety monitor role
 - Environment of Care (EOC) Management



Emergency Preparedness Standards and Requirements

The Joint Commission

- Independent, not-for-profit organization
- Oldest and largest standards-setting and accrediting body in healthcare
- Organizations pursue accreditation and certification through TJC to ensure they meet the latest high standards of patient safety and care
- 13 of 250+ TJC standards apply specifically to Emergency Management

The Joint Commission Areas

- Of the 13 TJC EM standards, there are 6 critical focus areas:
 - Communications
 - Resources & Assets
 - Security & Safety
 - Management of Staff
 - Management of Utilities
 - Management of Patients
- Each area has a dedicated section in Emergency Operations Plan, as well as its own multi-disciplinary Emergency Management Subcommittee



Hospital Preparedness Program

- Los Angeles County receives Hospital Preparedness Program (HPP) Grant funds from the federal government (Office of the Assistant Secretary for Preparedness and Response – ASPR)
- 100 hospitals (72 are 9-1-1 receiving), organized into 13 Disaster Resource Centers (DRCs)



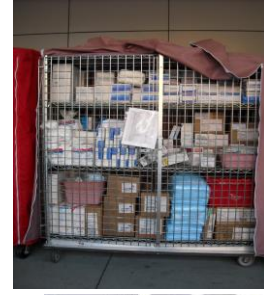
Hospital Preparedness Program

Ronald Reagan UCLA Medical Center Co-Leads the Westend DRC with Cedars Sinai Medical Center



Hospital Preparedness Program

- DRC responsibilities:
 - Store supplies, including pharmaceutical caches, tents, ventilators, etc
 - Collaborate with “umbrella hospitals” on coordination of resources, drills, and training
 - Facilitate PPE and decontamination training for staff
 - Assist with mutual aid coordination



UCLA Health Emergency Management Program Areas

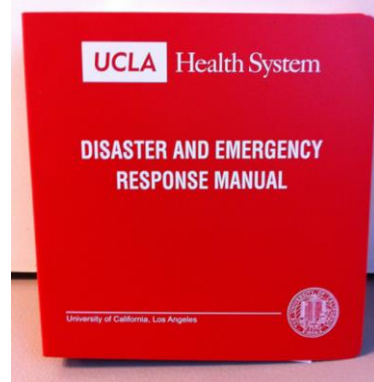
What's an “All-Hazards Approach?”

- Focus on capabilities and capacities
- Difficult to develop specific plans for each different hazard
- No two incidents are the same
- Plans are guides, not playbooks



Emergency Management

- Department disaster planning
- Emergency Operations Plan management
- Disaster kits
- Disaster communications
- Development of HVA (Hazard Vulnerability Assessment)



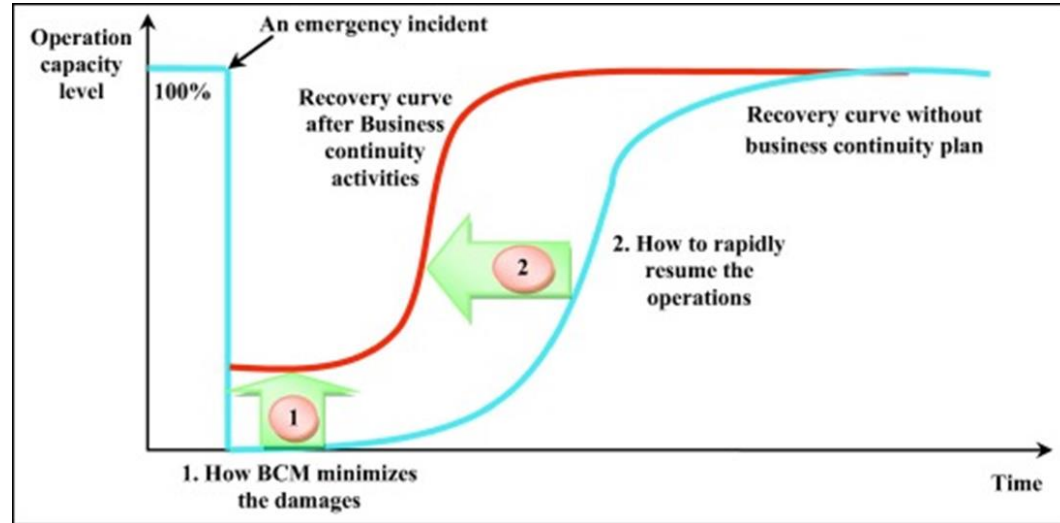
Emergency Management

- Incident management
- Command center support
- 24/7 on-call program
- After Action Report (AAR) / Improvement Plan (IP) processes



Business Continuity

- Planning for continuity of operations with diminished resources following a disaster
- Department business continuity plans via UC Ready



Training and Education

- Hospital Incident Command System (HICS)
- Department Emergency Response Manual
- Code Triage
- Decontamination



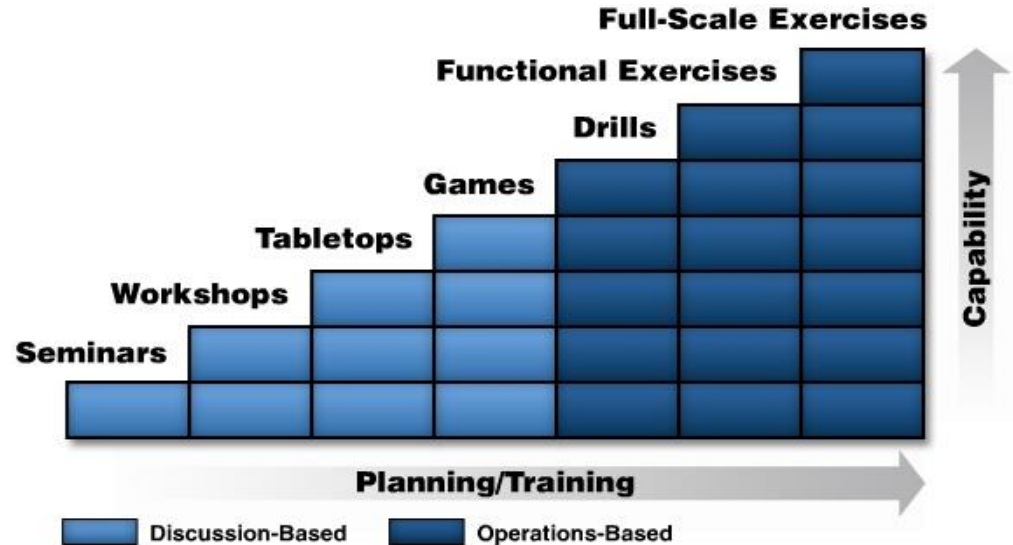
Training and Education

- Personal Preparedness
- H-CERT (Healthcare Community Emergency Response Training)



Exercise Planning

- Exercises are conducted throughout the year to test capabilities in different areas
- Complexity varies based on prior trainings and exercises in a given area



Exercise Planning

- Exercise requirements dictated by UCLA Health's preparedness goals as well as regulatory bodies
- Department-focused exercise support
- Institution-wide exercises
- Collaboration with external agencies



Exercise Planning

- Multi-Year Training and Exercise Plan (MYTEP)

UCLA Health Office of Emergency Preparedness

2020-2022 Training and Exercise Plan

a prepared 

July 2020 – December 2020

July	August	September	October	November	December
Santa Monica ED MCI Drill Q1 – July 8 ASPR: C2.02, C2.03, C4.02 TJC: 02.02.01, 02.02.03, 02.02.05, 02.02.07, 02.02.11 UCLA Health: MCI, COM, SRG, ID	Tabletop Exercise: Train Collision MCI – August 25 ASPR: C1.04.A1, C2.02, C2.03, C4.01, C4.02 TJC: 02.02.01, 02.02.03, 02.02.05, 02.02.07, 02.02.11 UCLA Health: MCI, COM, HIM, SRG	Tabletop Exercise: Topic TBD ASPR: TJC: UCLA Health:	Great California Shakeout Exercise – October 15 ASPR: C2.02.A3, C2.03.A3, C3.05.A2 TJC: 02.02.01 UCLA Health: COM, SPP	Tabletop Exercise: Topic TBD ASPR: TJC: UCLA Health:	
Tabletop Exercise: Medical Gas Failure – July 28 ASPR: C1.04.A1, C2.02, C2.03, C3.01, C3.02, C3.03 TJC: 02.02.01, 02.02.03, 02.02.05, 02.02.07, 02.02.09, 02.02.11 UCLA Health: COM, EVC, HIM			Tabletop Exercise: Topic TBD ASPR: TJC: UCLA Health:		
Ronald Reagan ED MCI Drill Q1 – July 29			Santa Monica ED MCI Drill Q2		

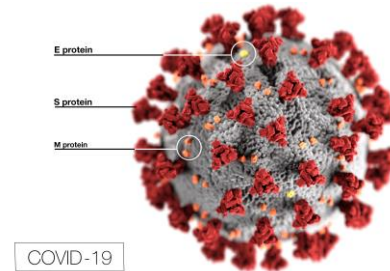
Emerging Infectious Disease Preparedness (EID)

- Ebola Treatment Center
- Training of staff for EID response
 - Donning and doffing PPE
 - Waste management
 - Role-specific training
- Safety monitor role in EID activations
- Incident communication



Emergency Preparedness & EID During COVID-19

- Activation of physical/virtual command center from March through May
- Surge plan & policy writing support
- Shadow bed exercise
- Construction of ED surge areas
- EID – Support of educational materials, including PPE donning & doffing, just-in-time training
- Planning/support of testing sites
- Vaccine planning (!!!)



Questions?